



# Project Erebus Floating Offshore Wind Farm

## Notice to Mariners

|               |                 |
|---------------|-----------------|
| NtM Number    | Erebus/008 v2.0 |
| Date of Issue | 02/09/2021      |

### 1 Planned Activity

#### Acoustic Doppler Current Profilers

##### Deployment and operation of two Acoustic Doppler Current Profilers (ADCPs)

To inform the engineering designs and Environmental Impact Assessments (EIA) for the proposed Erebus Floating Offshore Wind Farm (FLOW) offshore export cable, two frame mounted Acoustic Doppler Current Profilers (ADCP) have been successfully deployed within Rows Rocks Channel, near the entrance to the Milford Haven Waterways.

The ADCPs will be *in situ* on the seabed for up to 3 months. ADCP dimensions and an image of the ADCP and frame is shown below. A marker buoy will not be used during deployments.

| Item   | Location 1 (mid channel) | Location 2 (near shore) |
|--|--------------------------|-------------------------|
| Seabed frame weight                              | 240Kg                    | 100kg                   |
| Seabed frame dimensions                          | 1.5 x 1.5m               | 1m x 0.75m              |
| ADCP height above seabed                         | 0.5m                     | 0.3m                    |
| Highest point above seabed from entire equipment | 0.9m                     | 0.3m                    |



### 2 Geographic Co-ordinates (UTM 30 / WGS 84)

#### Location 1 (mid channel)

|                         |                |                 |
|-------------------------|----------------|-----------------|
| Degrees Minutes Seconds | 51°40'44.04" N | 005°08'10.80" W |
| Degrees Decimal Minutes | 51° 40.734' N  | 005° 08.180' W  |

#### Location 2 (near shore)

|                         |                |                 |
|-------------------------|----------------|-----------------|
| Degrees Minutes Seconds | 51°41'14.76" N | 005°07'21.12" W |
| Degrees Decimal Minutes | 51° 41.246' N  | 005° 07.352' W  |

### 3 Outline programme of work – Estimated removal date

#### ADCPs estimated removal date

25<sup>th</sup> November 2021

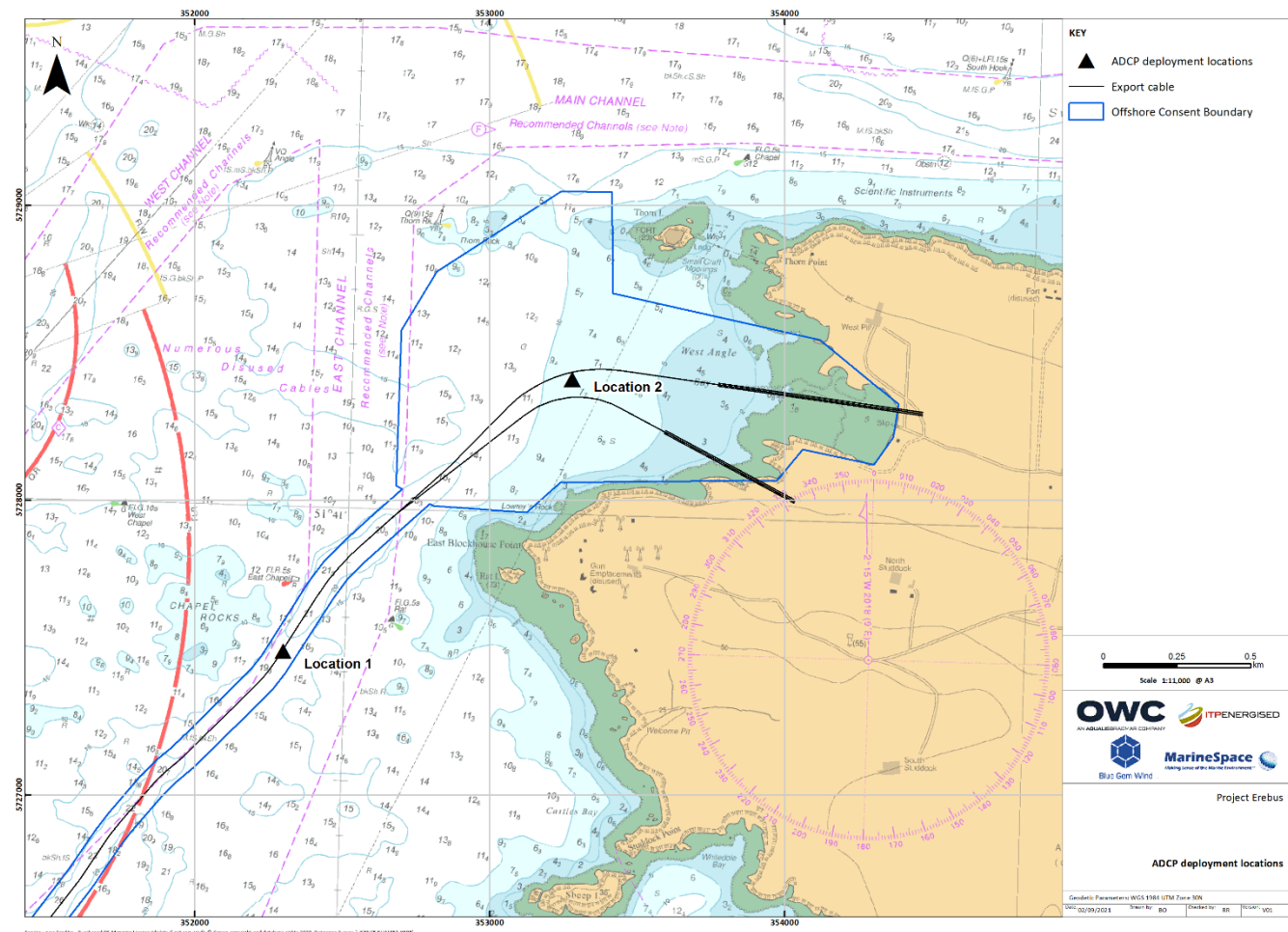
**This date is subject to weather permitting, and therefore there may be the potential for an extension to the work duration.**

### 4 Safe Clearances, Navigation Safety Features and Safety Notes for Mariners

The ADCPs will remain *in situ* for 3 months and therefore mariners should navigate with caution.



## 5 Chart of Acoustic Doppler Current Profilers Location



## 6 Project Contact Details

**Fisheries Liaison Officer: Jonny Lewis**  
 Email: [jonny.lewis@marinespace.co.uk](mailto:jonny.lewis@marinespace.co.uk)  
 Telephone: 07817 644284

**Fisheries Liaison Officer: Rhianna Roberts**  
 Email: [rhianna.roberts@marinespace.co.uk](mailto:rhianna.roberts@marinespace.co.uk)  
 Telephone: 07375 243358

| Document title             | Date       | Author | Reviewed By | Status |             |
|----------------------------|------------|--------|-------------|--------|-------------|
| Blue Gem Wind NtM/008 v2.0 | 02-09-2021 | BGW    |             | FINAL  | Page 2 of 2 |

