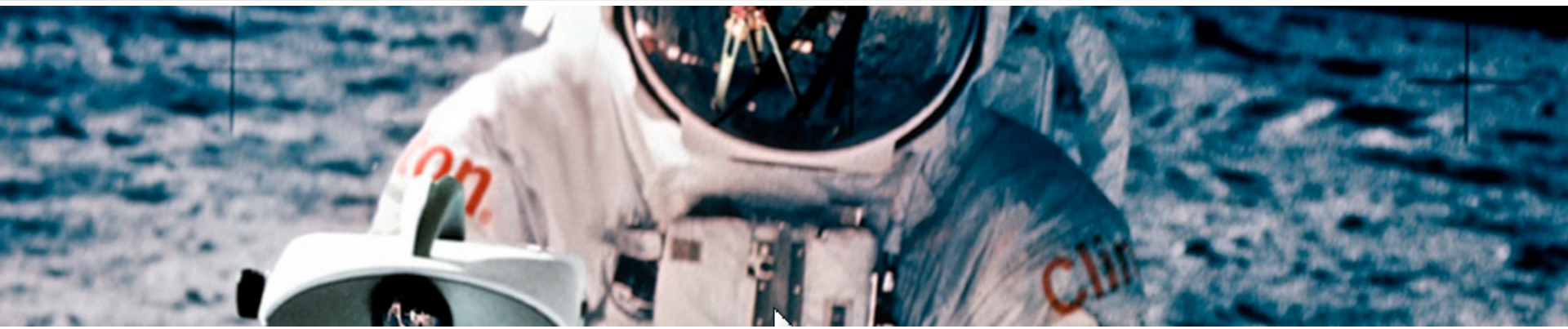
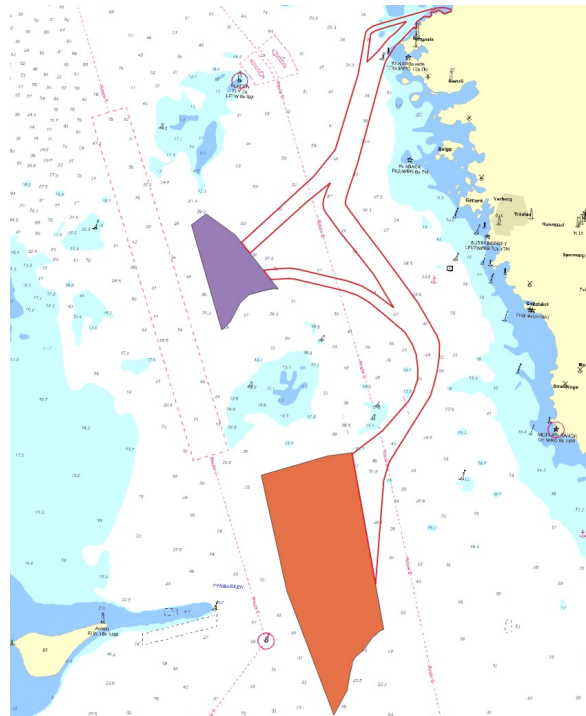
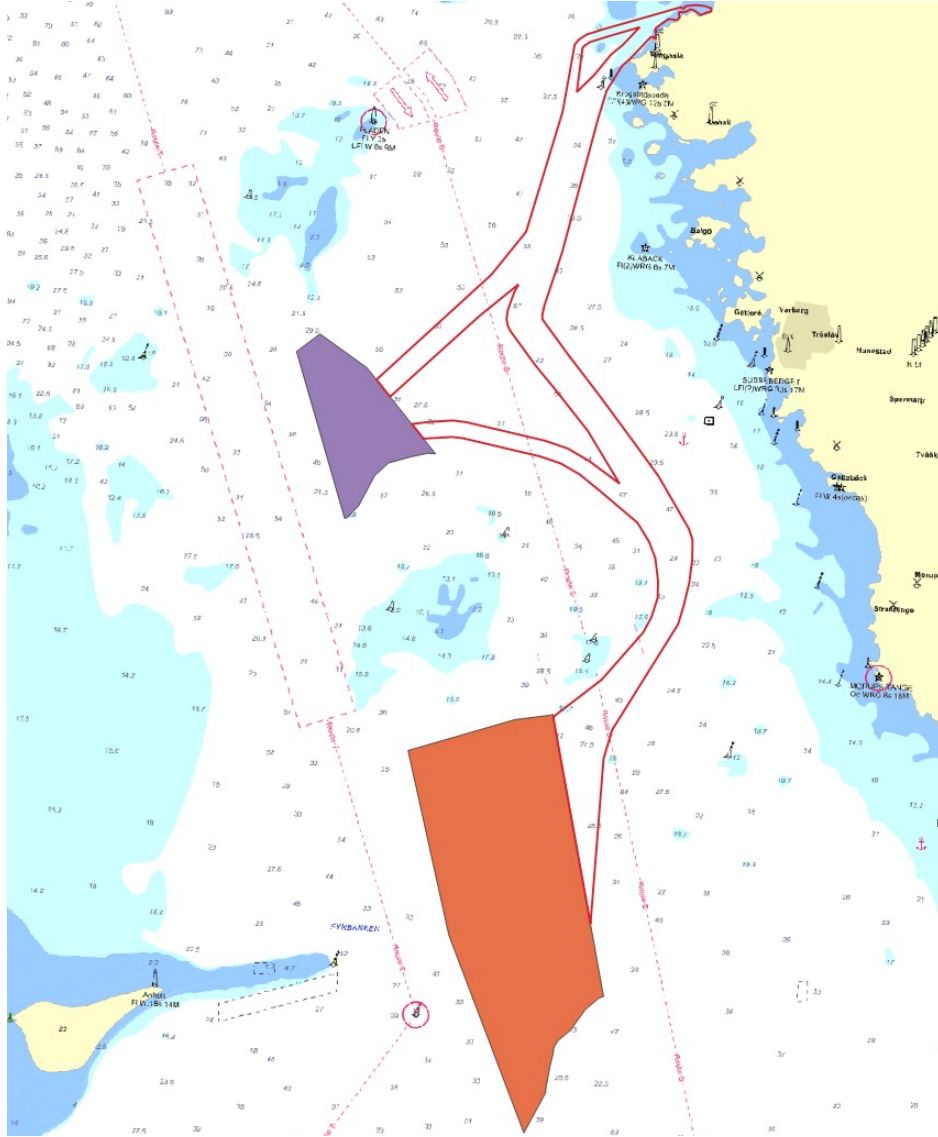


Notice to Mariners Geophysical survey, Galatea-Galene, Kattegatt area



- ❑ **VESSEL:** M/V NORTHERN STORM, M/V NORTHERN STAR (SHALLOWEST PARTS)
- ❑ **MANEUVERABILITY:** LIMITED MANEUVERABILITY
- ❑ **EQUIPMENT:** MULTIBEAM (HULL MOUNTED), SOUND VELOCITY PROFILER (TOWED)
- ❑ **TIME:** 15TH OF SEPTEMBER TO 10TH OF NOVEMBER – 2022
- ❑ **AIM:** HYDROGRAPHIC CONDITIONS FOR A POTENTIAL FUTURE WIND FARM





Hull mounted multibeam and towed sound velocity profiler equipment (from time to time) equipment will be used.

M/V Northern Storm

Calls sign: MISA7

Bridge: +46 31 30 11 132

Email: master-northernstorm@clinton.se

Contact person at Clinton Marine Survey:

Philip Ljungström	Project Manager	+46 708 79 90 26
Martin Wikmar	CEO	+46 708 79 90 20



MV Northern Star

Calls sign: SF7275

Bridge: +46 738 082902

Email: om-northernstar@clinton.se

Contact person at Clinton Marine Survey:

Philip Ljungström Project Manager +46 708 79 90 26

Martin Wikmar CEO +46 708 79 90 20

