

Notification to Fishermen

Nord Stream 2 Project

20.12.2018

1. Purpose of this notification

Nord Stream 2 AG hereby submits a notification for the activities to be performed for the Nord Stream 2 Project in January 2019.

During this period, rock placement and pipelay are planned in the Finnish Exclusive Economic Zone (EEZ). Pipelay will also continue in the Swedish EEZ, and rock placement activity of short duration (one or two days) may be carried out in Sweden.

Nord Stream 2 AG reminds that the construction vessels have limited manoeuvrability while performing their work and that safety exclusion zones are therefore established around the vessels carrying out the Nord Stream 2 activities.

2. Vessel information

Planned Vessels

Pipelay in Finland:

Pioneering Spirit – Call sign: 9HA4112



Pioneering Spirit Survey support:

Oceanic – Call sign: 9HA4426



Other supporting vessels to Pioneering Spirit:

Pipe Carriers:

Solvik Supplier, C6ZW5

Havila Crusader, LCAH3

Symphony Performer, PCVX

Sea Supra, LAEW8

Standard Supplier, MBFI6

Supply Ship:

Havila Fortress, C6NX9

Pipelay in Sweden:

Solitaire – Call sign: 9HA4114



Solitaire Survey support:

Fortitude – Call sign: 9HA4717



Other supporting vessels to Solitaire:

Pipe Carriers:

Symphony Provider, PCVX

Standard Provider, MCE59

Standard Supporter, MCEH2

Standard Princess, MAQY2

Standard Supplier, MBFI6

Normand Naley, LCOS

General support vessel:

Felicity, LNMG3

Alegria, LAFU8

Rock placement in Finland (and possibly Sweden):

Nordnes – Call sign: PHOG



3. Duration and locations of activities

In January, **rock placement** activities with *Nordnes* will continue in the Finnish jurisdiction. In addition, rock placement activity of short duration may be carried out in Sweden.

Pipelay with *Pioneering Spirit* will be implemented in January in the Finnish EEZ, with pipe supply to be carried out from Koverhar. The laying direction is from east to west, towards Sweden.

Solitaire will lay pipeline in the Swedish EEZ, with the laying direction from south to north, towards Finland. The pipe supply vessels will shuttle from the pipe logistics bases (Karlshamn and Koverhar) to the pipelay vessel.

Please note that these details are subject to change for operational reasons.

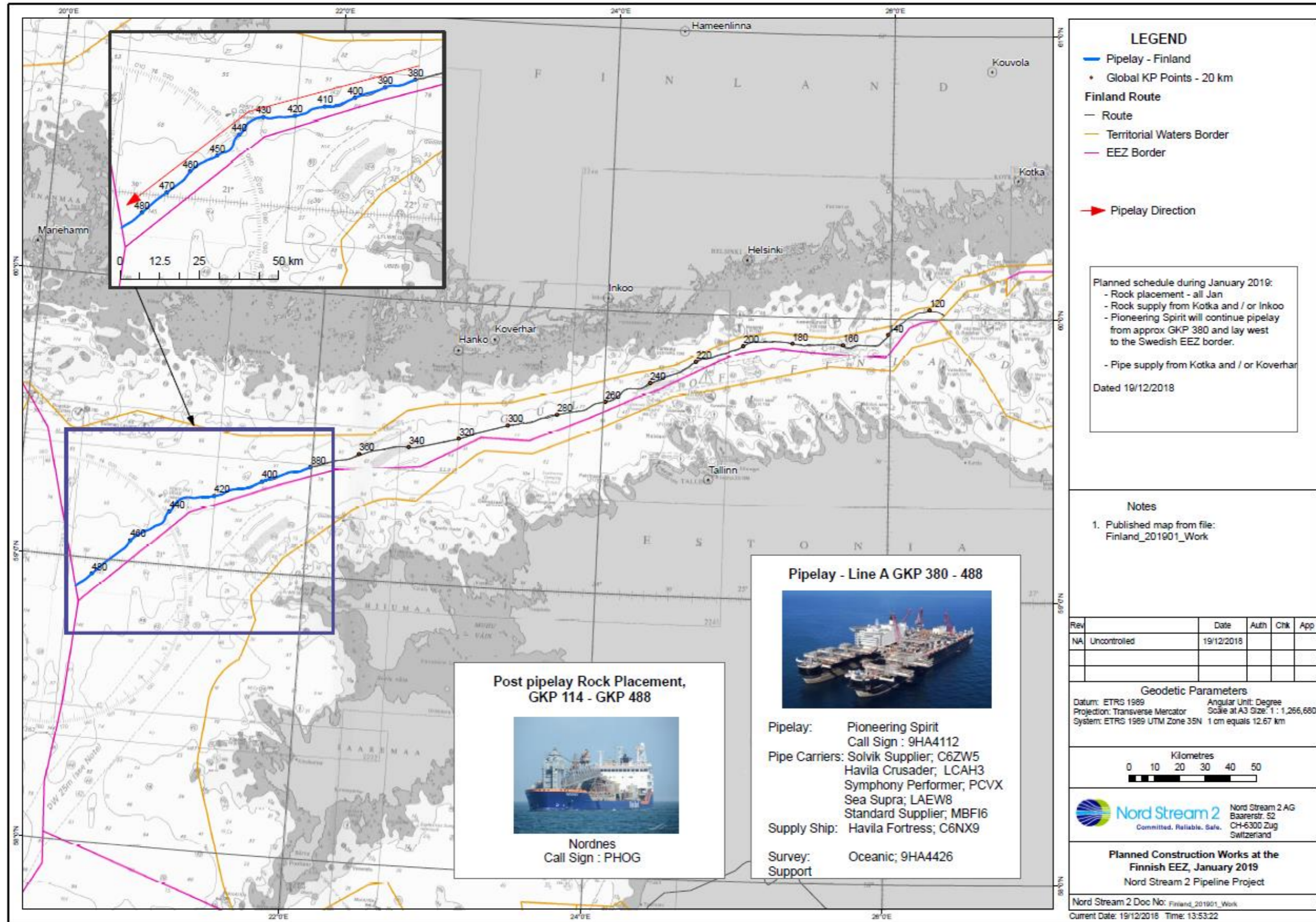


Figure 1: Nord Stream 2 activities in January in the Finnish EEZ

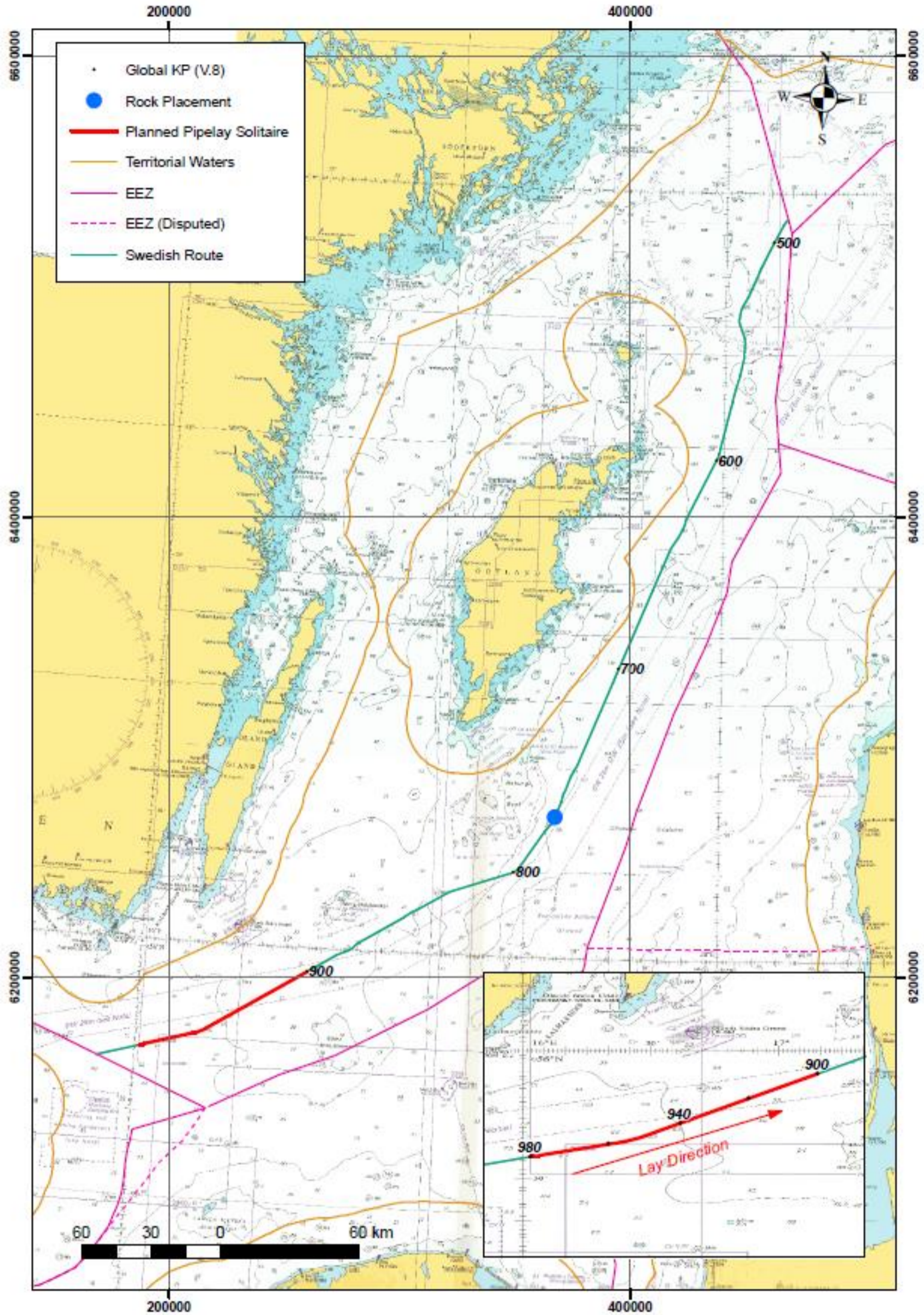


Figure 2: Nord Stream 2 activities in January in the Swedish EEZ

4. Exclusion Zones

Nord Stream 2 AG would like to highlight that a safety zone of 1 nautical mile is established around the pipelaying vessels *Solitaire* and *Pioneering Spirit*, and 500 meters around the other vessels performing activities for Nord Stream 2 Project.

Information about the works to be performed in the upcoming weeks, can also be found on the Notices to Mariners web-page, available at:

<https://www.liikennevirasto.fi/ammattimerenkulku/merikartat/merikarttojen-paivityspalvelu/tiedonantoja-merenkulkijoille-vuodesta-2005/2018#.W7HcLiB9jb0>¹

and

<http://www.sjofartsverket.se/sv/Sjofart/Sjokort/Ufs---Underrattelser-for-sjofarande-/Sok-i-databasen11/>

In addition to this information regarding January activities, further notification(s) will follow in due course with regards to Nord Stream 2 construction activities in the coming months.

¹ If you have issues with accessing this link, please copy and paste it into browser.