

Notification to Fishermen

Nord Stream 2 Project

26.07.2018

1. Purpose of this notification

Nord Stream 2 AG hereby submits a notification for the activities to be performed for the Nord Stream 2 Project in August 2018.

During this period, mattress installation, rock placement and pipelay are planned in the Finnish Exclusive Economic Zone (EEZ), as well as rock placement in the Swedish EEZ.

Nord Stream 2 AG reminds that the construction vessels have limited manoeuvrability while performing their work and that safety exclusion zones are therefore established around the vessels carrying out the Nord Stream 2 activities.

2. Vessel information

Planned Vessels

Oceanic – IMO number: 9703382; Call sign 9HA4426





Solitaire – IMO number: 7129049; Call sign 3ECI8



Supporting vessels

Pipe Carriers:

Solvik Supplier, C6ZW5

Havila Crusader, LCAH3

Symphony Performer, PBRD

Supply Ship:

Havila Fortress; C6NX9

Survey:

Stril Explorer, LAZT7, or equivalent

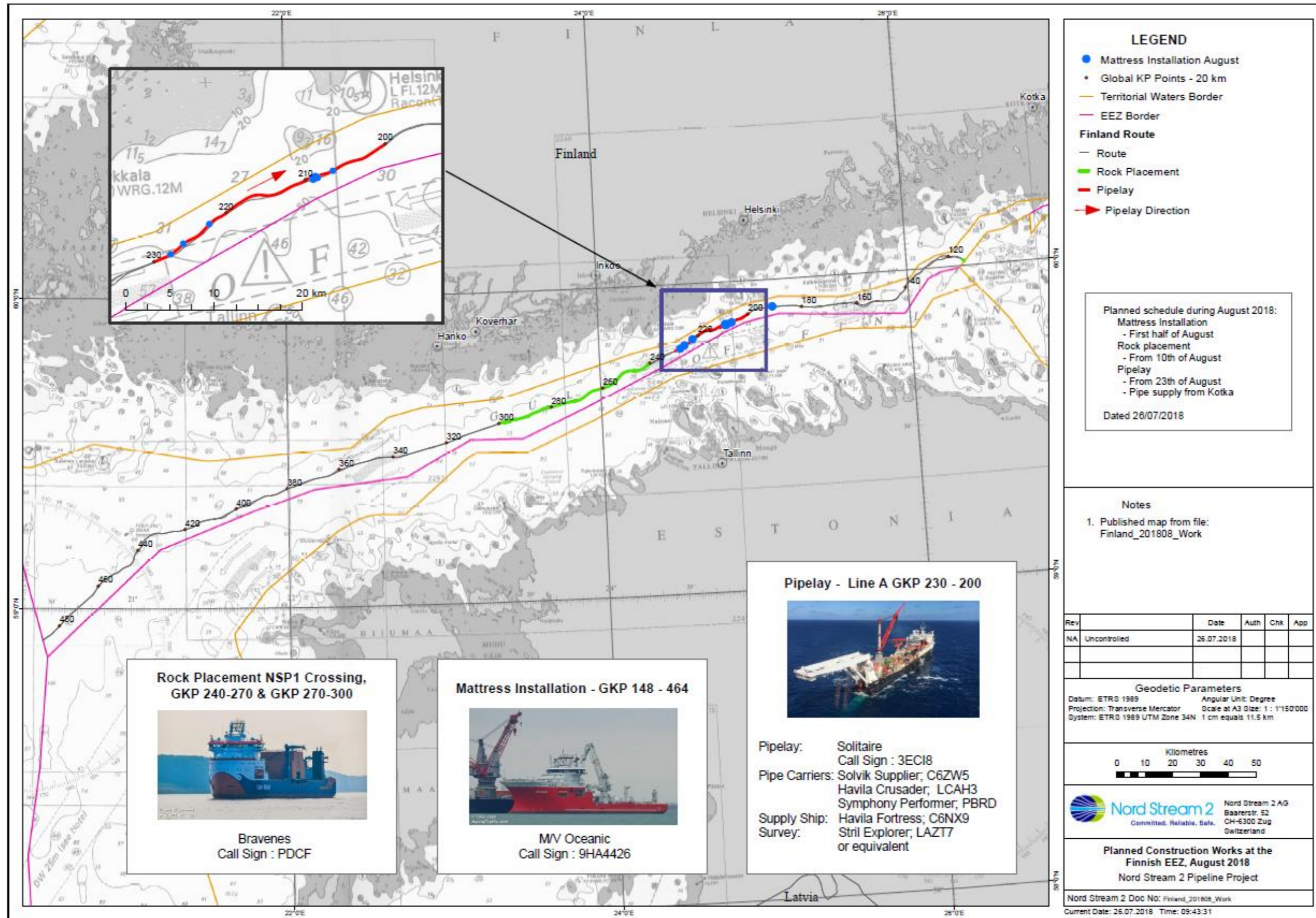
3. Duration and locations of activities

The two maps below illustrate the planned activities in August. The mattress installation with *Oceanic* will continue in the Finnish EEZ.

Bravenes will be in the Swedish EEZ for a few days in August, following which she will sail to the Finnish EEZ to perform rock placement activities in that jurisdiction.

Pipelay with *Solitaire* will commence in late August in the Finnish EEZ, with pipe supply to be carried out from Kotka.

Please note that these details are subject to change for operational reasons.



LEGEND

- Mattress Installation August
- ✦ Global KP Points - 20 km
- Territorial Waters Border
- EEZ Border

Finland Route

- Route
- Rock Placement
- Pipelay
- ➔ Pipelay Direction

Planned schedule during August 2018:

- Mattress Installation - First half of August
- Rock placement - From 10th of August
- Pipelay - From 23th of August
- Pipe supply from Kotka

Dated 26/07/2018

Notes

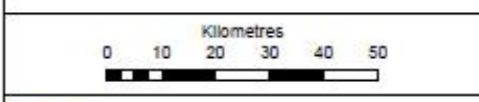
1. Published map from file: Finland_201808_Work

Rev	Date	Auth	Chk	App
NA	Uncontrolled	26.07.2018		

Geodetic Parameters

Datum: ETRS 1989
Projection: Transverse Mercator
System: ETRS 1989 UTM Zone 34N

Angular Unit: Degree
Scale at A3 Size: 1 : 1'150'000
1 cm equals 11.5 km



Nord Stream 2 AG
Baarerstr. 52
CH-6300 Zug
Switzerland

Planned Construction Works at the Finnish EEZ, August 2018
Nord Stream 2 Pipeline Project


Nord Stream 2 Doc No: Finland_201808_Work
Current Date: 26.07.2018 Time: 09:43:31

Rock Placement NSP1 Crossing, GKP 240-270 & GKP 270-300



Bravenes
Call Sign : PDCF

Mattress Installation - GKP 148 - 464



MV Oceanic
Call Sign : 9HA4426

Pipelay - Line A GKP 230 - 200

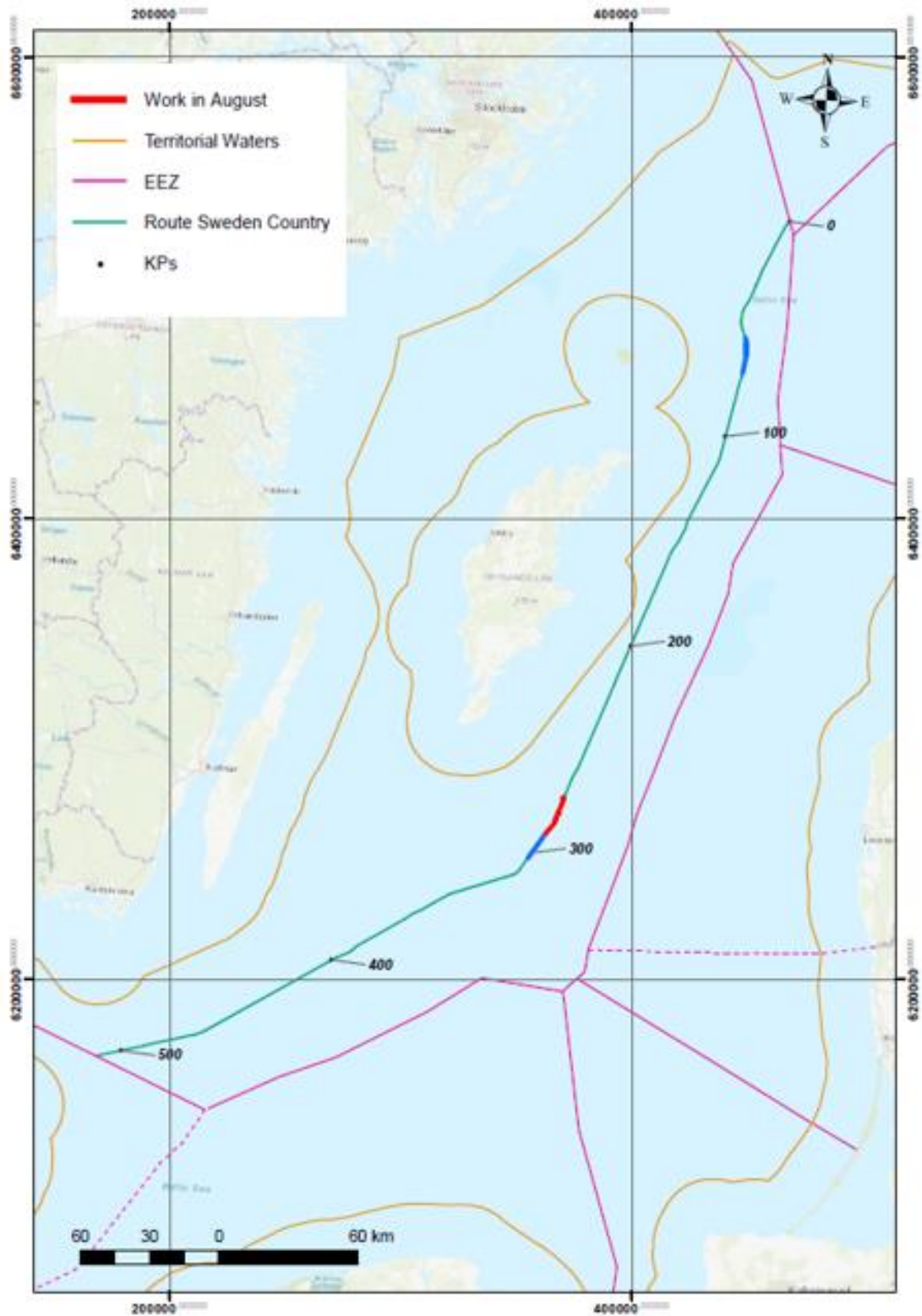


Pipelay: Solitaire
Call Sign : 3ECI8

Pipe Carriers: Solvik Supplier; C6ZW5
Havila Crusader; LCAH3
Symphony Performer; PBRD

Supply Ship: Havila Fortress; C6NX9

Survey: Stril Explorer; LAZT7 or equivalent



4. Exclusion Zones

Nord Stream 2 AG would like to highlight that a safety zone of 1 nautical mile is established around Solitaire and 500 meters around the other vessels performing activities for Nord Stream 2 Project.

Information about the works to be performed in the upcoming weeks, can also be found on the Notices to Mariners web-page, available at:

<https://www.liikennevirasto.fi/ammattimerenkulku/merikartat/merikarttojen-paivityspalvelu/tiedonantoja-merenkulkijoille-vuodesta-20052/2018#.Wt2v5U0Ukbz¹>

and

<http://www.sjofartsverket.se/sv/Sjofart/Sjokort/Ufs---Underrattelser-for-sjofarande-/Sok-i-databasen11/>

In addition to this information regarding August activities, further notification(s) will follow in due course with regards to Nord Stream 2 construction activities in the coming months.

¹ If you have issues with accessing this link, please copy and paste it into browser.